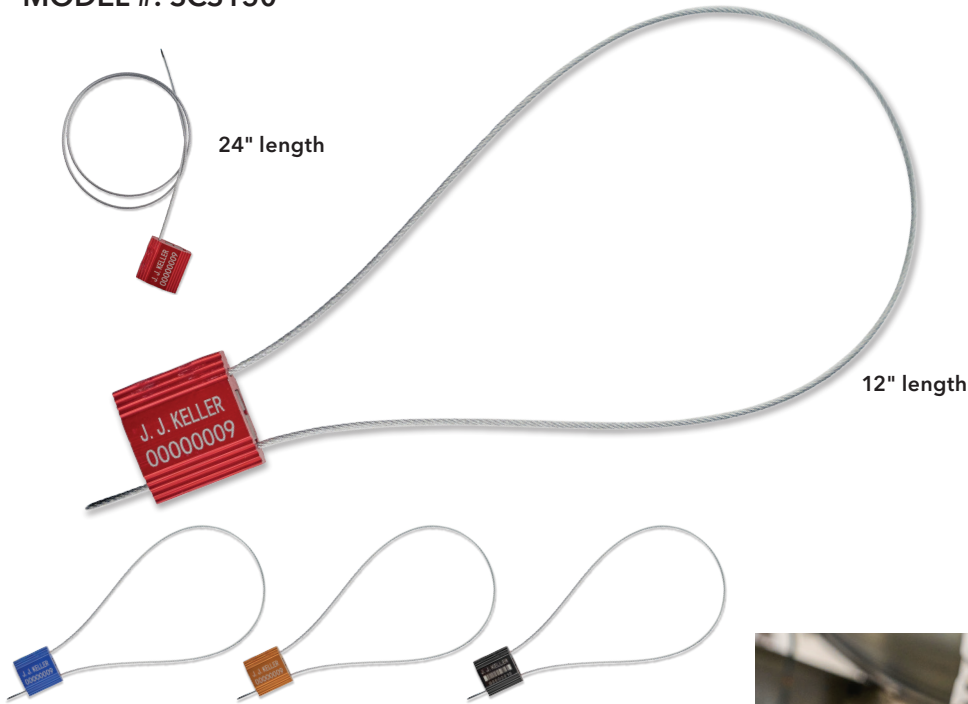


J. J. KELLER® SCS150 1.5 MM CABLE SEAL

MODEL #: SCS150



For nearly 70 years, J. J. Keller has been the industry leader, helping transport companies maintain safe, compliant and secure operations. We offer seals for every level of security and a range of industries, including our new proprietary seals.

Features

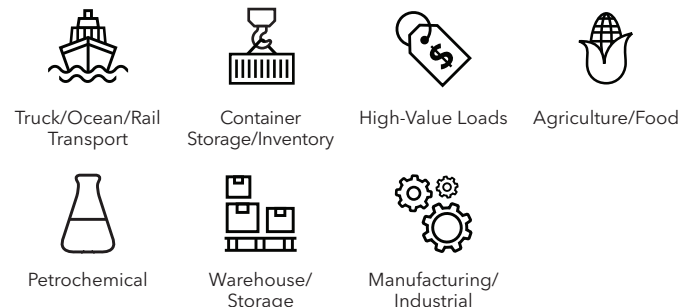
- Aluminum lock body with galvanized steel cable
- Flexible pull-tight cable seal design is easy to bend and feed through equipment lock openings
- Cable frays upon cutting to show evidence of tampering and prevents reuse
- Laser etching provides high-contrast marking for greater readability and security than surface printing
- Convenient inner packs of 10 sequentially numbered seals per bag with a label indicating the range of seal numbers enclosed to help simplify and control seal distribution
- Available 24" long cable designed for securing multiple valves with one seal
- Personalized seals with your company name or logo and choice of numbers also available



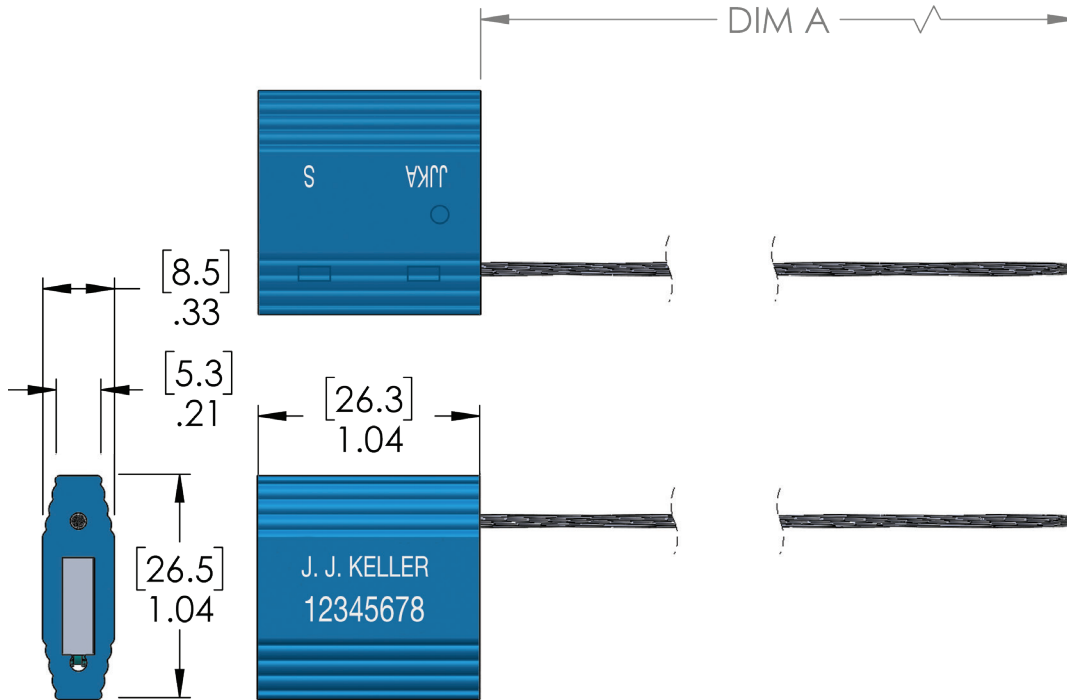
Common Equipment Uses

- Tanker Valves/Hatches
- Trailer Door Latch
- Intermodal Container Door Latch
- Rail Boxcar Latch
- Meters
- Drums
- Storage Tanks

Common Applications



J. J. KELLER® SCS150 1.5 MM CABLE SEAL



Colors

COLOR	STOCK 12"	STOCK 24"
Blue	61570	61574
Orange	61571	61575
Red	61572	61576
Black WITH BARCODE	61569	61573

Barcode Types

- Code 128
- Code 39
- Code 25 (Interleaved 2 of 5)

Marking

Stock: Laser etched with J. J. KELLER text and 8 digit sequential numbers

Material

- Anodized aluminum lock body
- Galvanized steel aircraft cable

Tensile Strength

728 lbf (>2,27 kN-<10 kN)

Dimensions

STOCK 12"	STOCK 24"
LOCK BODY: 1.04" L x 1.04" W x .33" H (26.3 mm L x 26.5 mm W x 8.5 mm H)	
CABLE: .06" dia x 12" L 1.5 mm (1/16) dia x 30.5 cm L	CABLE: .06" dia x 24" L 1.5 mm (1/16) dia x 61.0 cm L

Packaging

INNER PACK:

10 sequentially numbered seals per bag with a label indicating the range of seal numbers enclosed

CARTON PACK:

500 seals

CARTON WEIGHT:
21.3 lb (9.65 kg)

CARTON WEIGHT:
24.3 lb (11.0 kg)

CARTON DIMENSIONS:

17.7" L x 8.7" W x 4.3" H
(45 cm L x 22 cm W x 11 cm H)