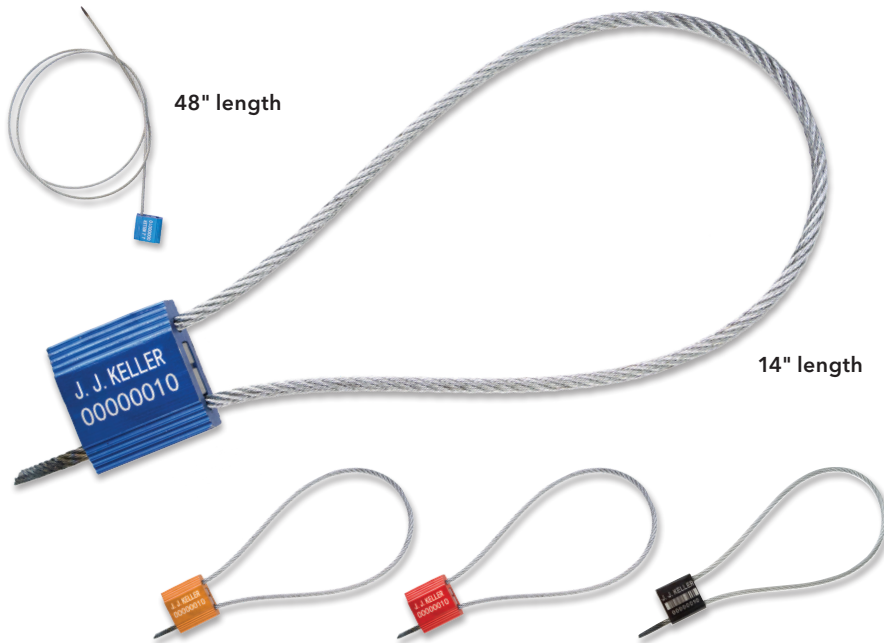


J. J. KELLER® HCS325 3.25 MM CABLE SEAL

MODEL #: HCS325



H HIGH SECURITY



For nearly 70 years, J. J. Keller has been the industry leader, helping transport companies maintain safe, compliant and secure operations. We offer seals for every level of security and a range of industries, including our new proprietary seals.

Features

- Aluminum lock body with galvanized steel cable
- C-TPAT compliant
- Flexible pull-tight cable seal design is easy to bend and feed through equipment lock openings
- Cable frays upon cutting to show evidence of tampering and prevents reuse
- Laser-etching provides high-contrast marking for greater readability and security than surface printing
- Convenient inner packs of 10 sequentially numbered seals per bag with a label indicating the range of seal numbers enclosed to help simplify and control seal distribution
- Available 48" long cable designed to wrap around keeper bars for added protection from trailer door attacks or for securing multiple valves with one seal
- Personalized seals with your company name or logo and choice of numbers also available



Common Equipment Uses

- Tanker Valves/Hatches
- Trailer Door Latch
- Intermodal Container Door Latch
- Rail Boxcar Latch

Common Applications



Border Crossing



Truck/Ocean/
Rail Transport



Container
Storage/
Inventory



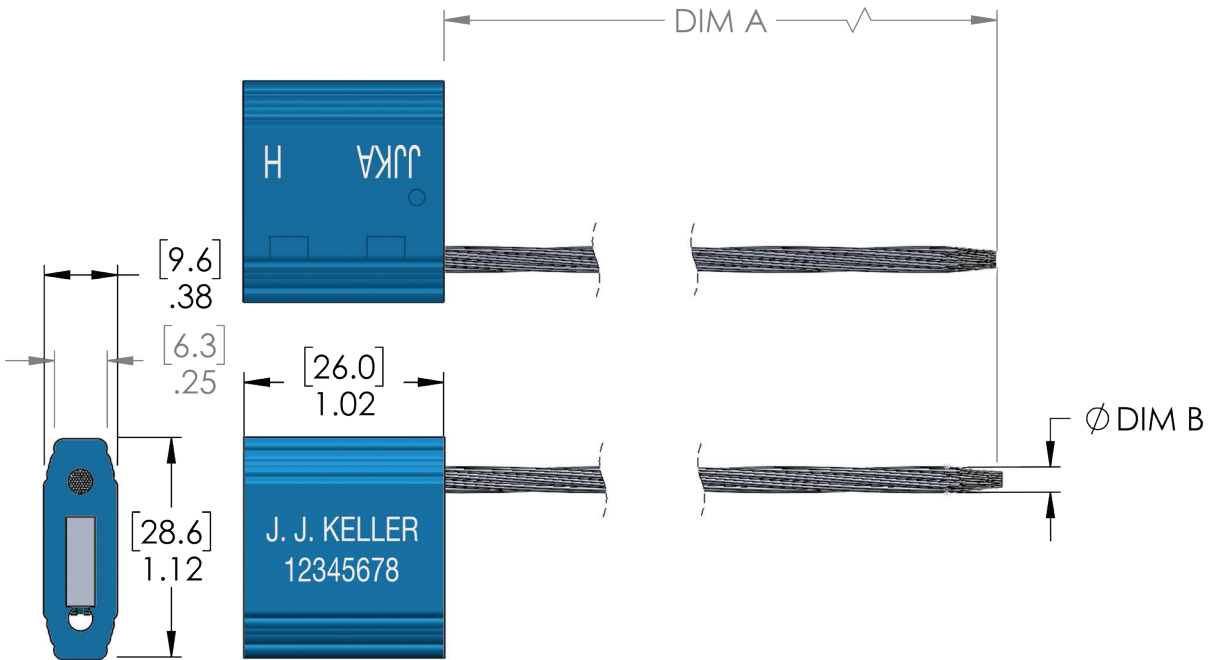
High-Value
Loads



Agriculture/
Food

J. J. KELLER® HCS325

3.25 MM CABLE SEAL



Colors

COLOR	STOCK 14"	STOCK 48"
Blue	61586	61590
Orange	61587	61591
Red	61588	61592
Black WITH BARCODE	61585	61589

Barcode Types

- Code 128
- Code 39
- Code 25 (Interleaved 2 of 5)

Marking

Stock: Laser-etched with J. J. KELLER text and 8 digit sequential numbers

Material

- Aluminum lock body
- Galvanized steel aircraft cable

Tensile Strength

2,468 lbf (>10 kN)

Dimensions

STOCK 14"	STOCK 48"
-----------	-----------

LOCK BODY:

1.02" L x 1.12" W x .38" H
(26.0 mm L x 28.6 mm W x 9.6 mm H)

CABLE:

.125" dia x 14" L
3.25 mm (1/8" dia) x 35.6 cm L

CABLE:

.125" dia x 48" L
3.25 mm (1/8" dia) x 121.9 cm L

Packaging

STOCK 14"	STOCK 48"
-----------	-----------

INNER PACK:

10 sequentially numbered seals per bag with a label indicating the range of seal numbers enclosed

CARTON PACK:

200 seals

CARTON WEIGHT:

16.1 lb (7.3 kg)

CARTON WEIGHT:

32.0 lb (14.5 kg)

CARTON DIMENSIONS:

17.7" L x 8.7" W x 4.3" H
(45 cm L x 22 cm W x 11 cm H)

CARTON DIMENSIONS:

16.9" L x 11.0" W x 4.3" H
(43 cm L x 28 cm W x 11 cm H)