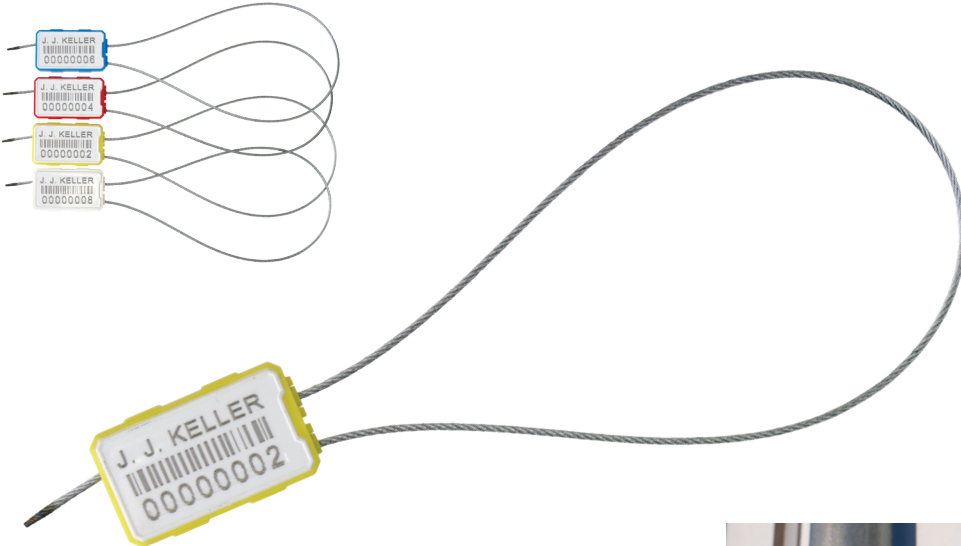


# J. J. KELLER® SCS150P 1.5 MM CABLE SEAL

MODEL #: SCS150P

  
**J. J. Keller**  
& Associates, Inc.®  
Since 1953



14" length

**I** INDICATIVE

 **ISO 17712**  
INDICATIVE  
("I") SEAL



For nearly 70 years, J. J. Keller has been the industry leader, helping transport companies maintain safe, compliant and secure operations. We offer seals for every level of security and a range of industries, including our new proprietary seals.



## Features

- ABS plastic body with galvanized steel cable
- Flexible pull-tight cable seal design is easy to bend and feed through equipment lock openings
- Cable frays upon cutting to show evidence of tampering and prevents reuse
- Two-color lock body provides greater readability and security
- Markings are laser etched on large white panel for easier reading and reliable barcode scanning
- Convenient inner packs of 10 sequentially numbered seals per bag with a label indicating the range of seal numbers enclosed to help simplify and control seal distribution
- Personalized seals with your company name or logo and choice of numbers also available

## Common Equipment Uses

- Tanker Valves/Hatches
- Trailer Door Latch
- Airline Containers/Carts
- Rail Boxcar Latch
- Meters
- Drums
- Storage Tanks
- Storage Cabinets

## Common Applications



Truck/Rail  
Transport



Container  
Storage/Inventory



High-Value Loads



Agriculture/Food



Petrochemical



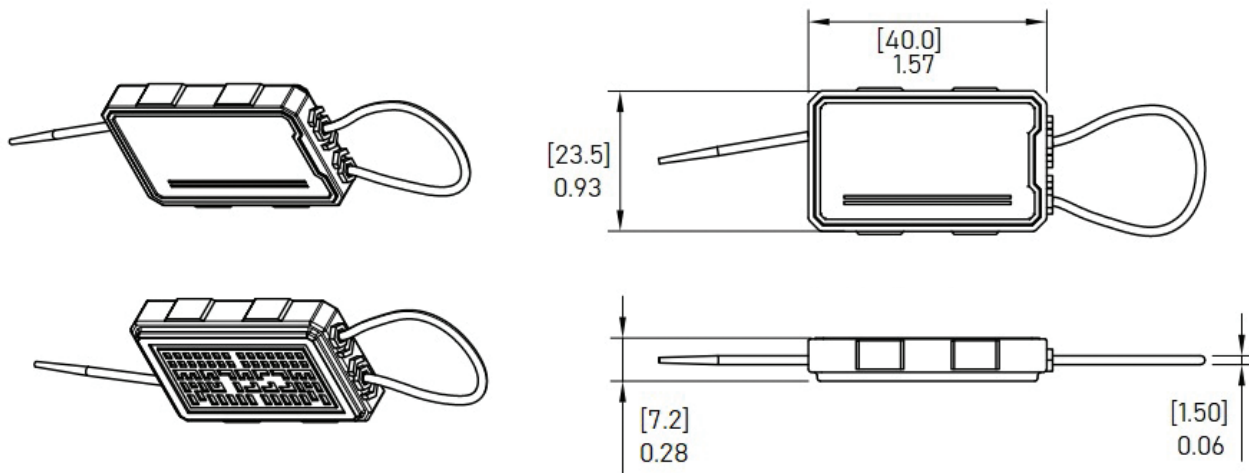
Warehouse/  
Storage



Manufacturing/  
Industrial

# J. J. KELLER® SCS150P

## 1.5 MM CABLE SEAL



### Colors

COLOR	STOCK 14"
Blue	67848
White	67850
Red	67849
Yellow	67851

### Barcode Types

- Code 128
- Code 39
- Code 25 (Interleaved 2 of 5)

### Marking

Stock: Laser etched with J. J. KELLER text and Code 128 barcoded 8-digit sequential numbers

### Material

- ABS plastic lock body
- Galvanized steel aircraft cable

### Tensile Strength

396 lbf (<2.27kN)

### Dimensions

#### LOCK BODY:

.93" L x 1.57" W x .28" H  
(23.5 mm L x 40.0 mm W x 7.2 mm H)

#### CABLE:

.0625" dia x 14" L  
1.5 mm (1/16") dia x 35.5 cm L

### Packaging

#### INNER PACK:

10 sequentially numbered seals per bag with a label indicating the range of seal numbers enclosed

#### CARTON PACK:

500 seals

#### CARTON WEIGHT:

12.1 lb (5.5 kg)

#### CARTON DIMENSIONS:

5.1" L x 16.9" W x 8.3" H  
(13 cm L x 43 cm W x 21 cm H)

