

# J. J. KELLER® PLACARD HOLDERS



**J. J. Keller**  
& Associates, Inc.®  
Since 1953

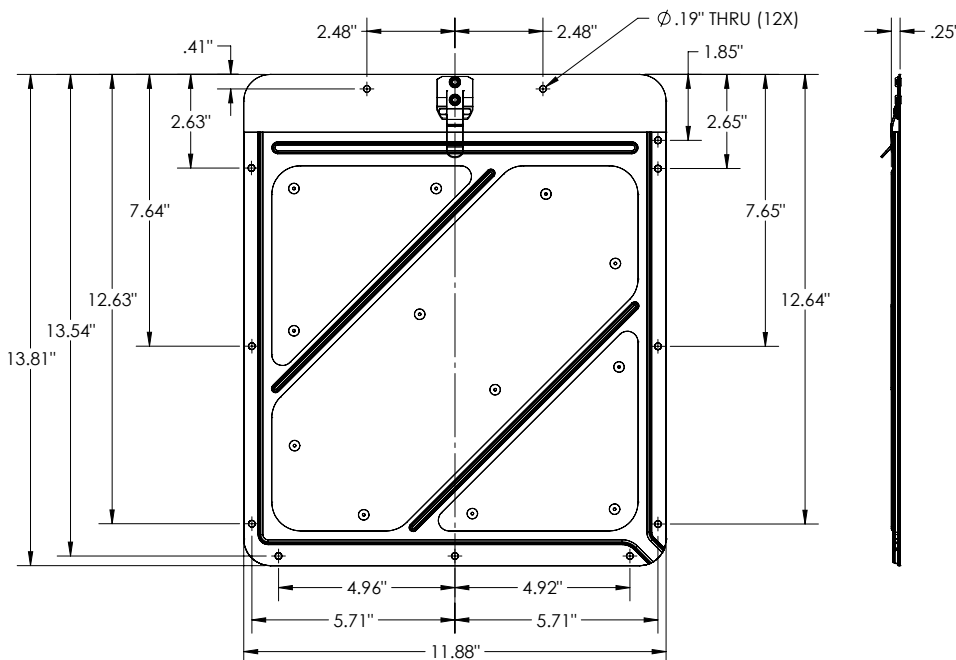


For over 70 years, companies of all sizes have turned to J. J. Keller for innovative compliance products and services they can rely on. Our placard holders are no exception, with high quality, durable construction and features that matter most to our customers:

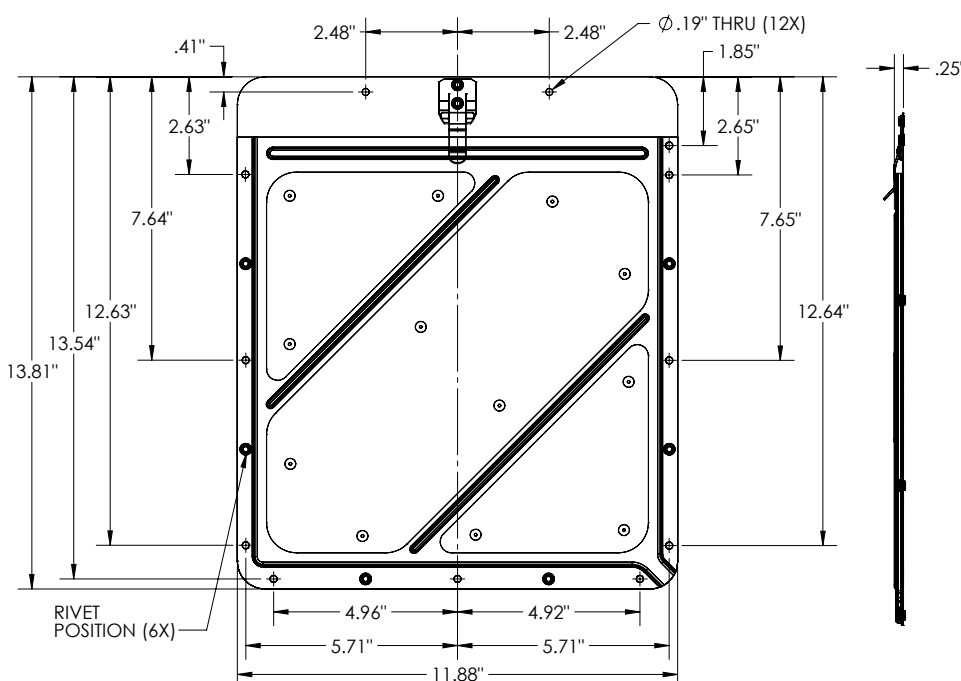
- Designed for easy install on new trucks/trailers/tankers/rail cars, or replacement on existing equipment
- Constructed of 75% recycled content
- Adhere to industry standards for drill hole locations
- Built for impact resistance to withstand hard elements
- Include a patented Dura-Clip® fastener that prevents clip arms from being dislodged, eliminating replacement costs and compliance issues
- Include rounded drain corners to channel away rain, slush and debris



## RIVETLESS PLACARD HOLDER - 582, 585

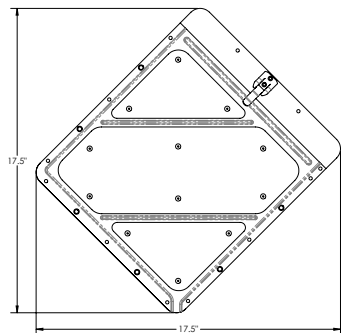


## RIVETED PLACARD HOLDER - 80, 83, 193

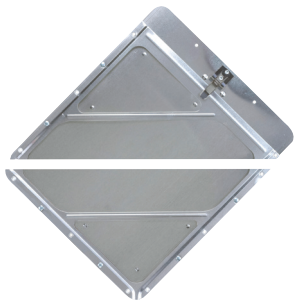


### PLACARD HOLDER

Base Plate Size	Aluminum .026" Stainless Steel .024"
Clips	Dura-Clip®
Corners	Rounded Drain Corners
Construction (see diagram on page 2)	Riveted or Rivetless
Color	Unpainted or White (Painted)
Mounting Holes	12
Dimensions	17.5" W x 17.5" H

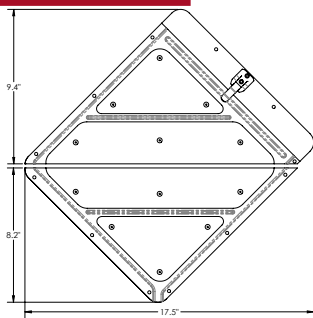


### Installation Orientation

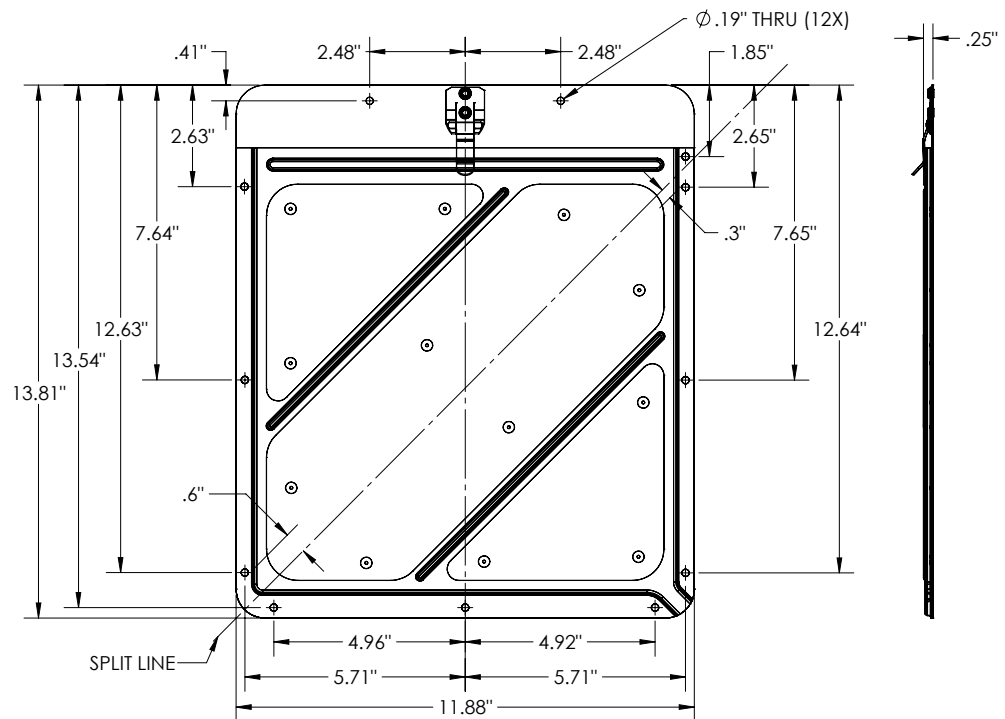


## RIVETLESS SPLIT PLACARD HOLDER - 583, 584

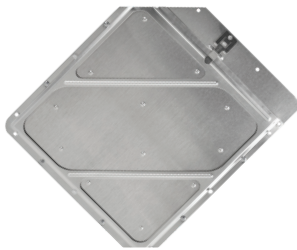
SPLIT PLACARD HOLDER	
Base Plate Size	.026"
Clips	Dura-Clip®
Corners	Rounded Drain Corners
Construction (see diagram below)	Rivetless
Color	Unpainted or White (Painted)
Mounting Holes	12
Dimensions	17.5" W x 17.6" H



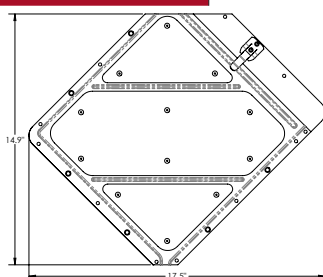
Installation Orientation



## RIVETED CLIPPED CORNER PLACARD HOLDER - 4792



CLIPPED PLACARD HOLDER	
Base Plate Size	.026"
Clips	Dura-Clip®
Corners	Rounded Drain Corners
Construction (see diagram below)	Riveted
Color	Unpainted
Mounting Holes	11
Dimensions	17.5" W x 14.9" H



Installation Orientation

