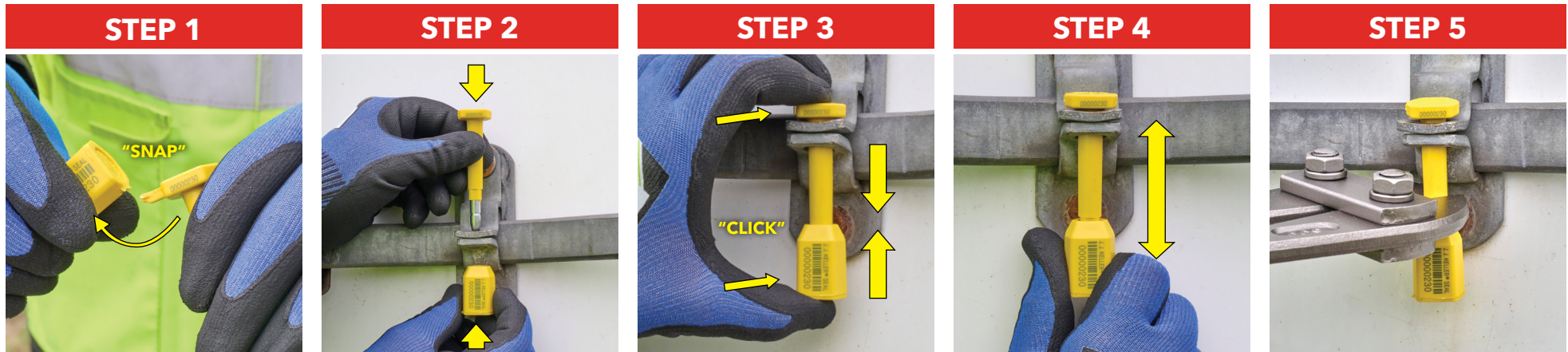


J. J. KELLER® HBS1CP
1-COLOR COATED PIN BOLT SEAL



MODEL #: HBS1CP

BOLT SEAL INSTALLATION AND REMOVAL PROCEDURES



STEP 1: Snap the pin and barrel apart.

STEP 2: Insert pin through lock hasp.

STEP 3: Align numbering on pin and barrel so they are visible, then push the pin and barrel together until you hear a "click."

STEP 4: Pull firmly on the barrel to ensure the locking mechanism is engaged.

STEP 5: To remove the seal, cut the pin shaft with a bolt cutter; wear personal protective equipment (PPE) when cutting the seal to prevent injury.