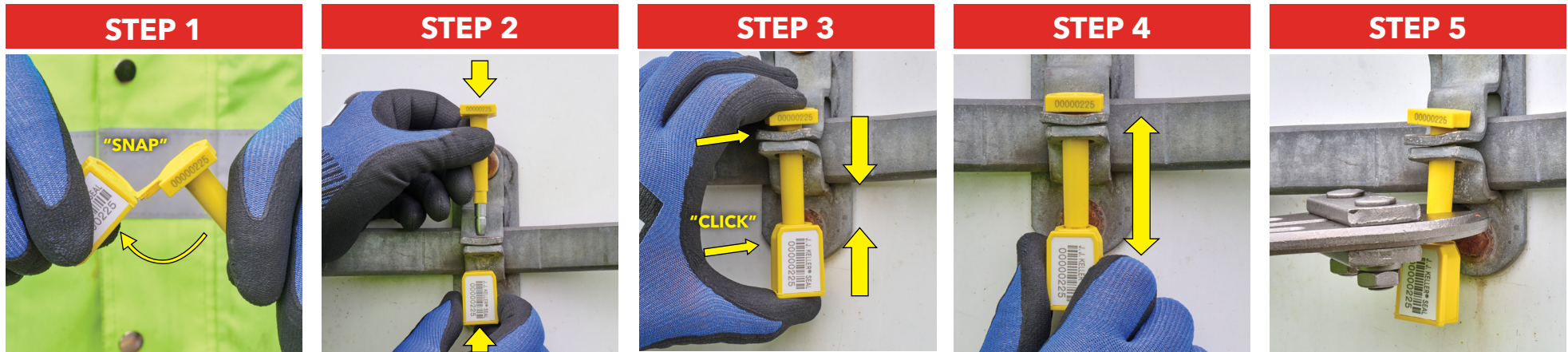


J. J. KELLER® HBS2CP  
**2-COLOR COATED PIN BOLT SEAL**



MODEL #: HBS2CP

## BOLT SEAL INSTALLATION AND REMOVAL PROCEDURES



**STEP 1:** Snap the pin and barrel apart.

**STEP 2:** Insert pin through lock hasp.

**STEP 3:** Align numbering on pin and barrel so they are visible, then push the pin and barrel together until you hear a "click."

**STEP 4:** Pull firmly on the barrel to ensure the locking mechanism is engaged.

**STEP 5:** To remove the seal, cut the pin shaft with a bolt cutter; wear personal protective equipment (PPE) when cutting the seal to prevent injury.