



# DRIVER'S DAILY LOG

(ONE CALENDAR DAY - 24 HOURS)

(MONTH) (DAY) (YEAR)

VEHICLE NUMBERS - (SHOW EACH UNIT)

I certify these entries are true and correct:

(TOTAL MILES DRIVING TODAY)

(DRIVER'S SIGNATURE IN FULL)

(NAME OF CARRIER OR CARRIERS)

(NAME OF CO-DRIVER)

(MAIN OFFICE ADDRESS)

(HOME TERMINAL ADDRESS)

## RECAP

DAY NO.

DRIVING HRS. TODAY  
TOTAL LINE 3

DRIVING VIOLATION TODAY

ON DUTY HRS. TODAY TOTAL  
LINES 3 & 4

**70 HR/8 DAY DRIVERS**

A.

TOTAL HRS. ON DUTY LAST 7 DAYS, INCL. TODAY

B.

TOTAL HRS. AVAILABLE TOMORROW  
70 HRS. MINUS A

C.

TOTAL HRS. ON DUTY LAST 8 DAYS, INCL. TODAY

**60 HR/7 DAY DRIVERS**

A.

TOTAL HRS. ON DUTY LAST 6 DAYS, INCL. TODAY

B.

TOTAL HRS. AVAILABLE TOMORROW  
60 HRS. MINUS A

C.

TOTAL HRS. ON DUTY LAST 7 DAYS, INCL. TODAY

\*IF 24-HOUR OR 34-HOUR RESTART APPLIES, YOU HAVE 60/70 HOURS AVAILABLE AGAIN.

MID-NIGHT 1 2 3 4 5 6 7 8 9 10 11 NOON 1 2 3 4 5 6 7 8 9 10 11 TOTAL HOURS

- 1: OFF DUTY
- 2: SLEEPER BERTH
- 3: DRIVING
- 4: ON DUTY (NOT DRIVING)
- 5: OFF DUTY (WAITING TIME AT WELL SITE)  
Oilfield  
Exemption 395.1(d)(2)

REMARKS

SHIPPING DOCUMENTS:

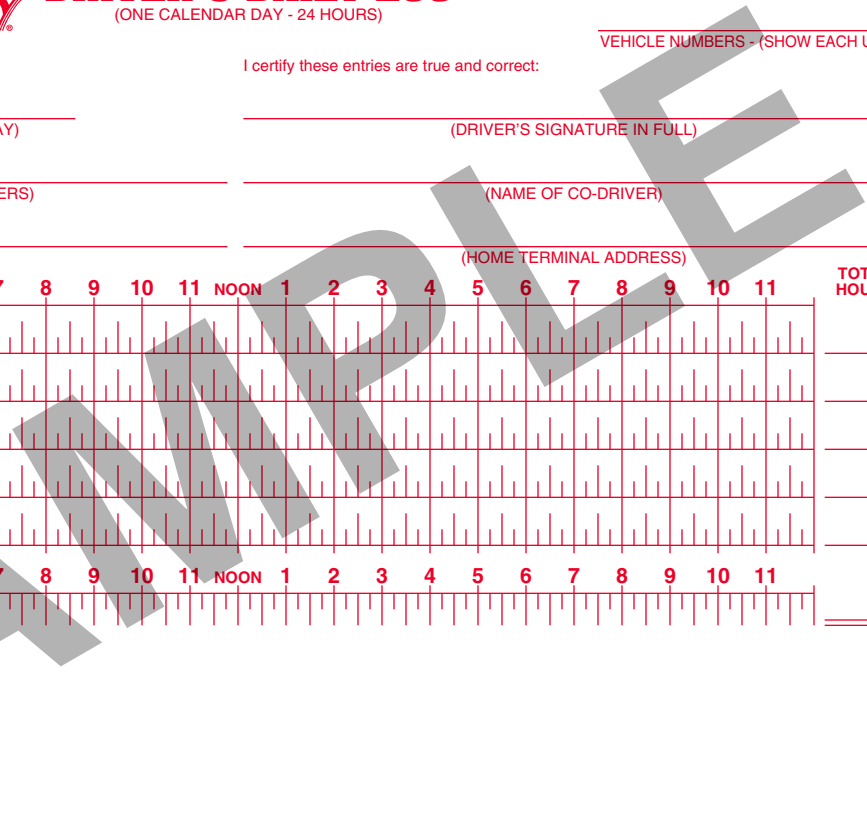
B/L or Manifest No. or Shipper & Commodity

Enter name of place you reported and where released from work and when and where each change of duty occurred.

USE TIME STANDARD AT HOME TERMINAL

Copyright 2013 J. J. Keller & Associates, Inc.® All rights reserved.

15060



BOUND EDGE